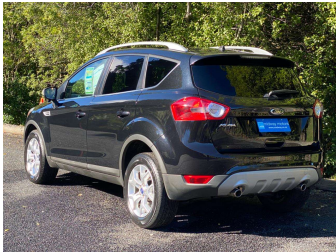


# 2013 Ford Kuga TREND



Purchase Price

**\$14,990**

Includes GST  
Excludes on-road costs of \$350

Indicative repayments

**\$83.05 per week\***

Based on a 60 month term & no deposit.  
Total repayments (260) = **\$21,593.38**

Gain peace of mind with  
Mechanical Breakdown  
Insurance. **Ask us how.**

### Top features

- » 3 lap and diagonal sea...
- » Air Conditioning
- » Alloy Wheels
- » Body Kit (Factory)
- » CD Player
- » Child seat anchor poin...
- » Electric Mirrors
- » Rear Spoiler
- » Rear Wiper
- » Remote Central Locking
- » Roof Rails
- » UV Cut Tinted Glass

Body Style

**SUV**

Odometer

**51,622 km**

Engine

**2500 cc**

Fuel Type

**Petrol**

Transmission

**Automatic**

Wheels

**18", Factory Alloys**

VIN

-

Interior

**Black/Grey, Cloth**

Safety



Based on 2023 VSRR rating

Reg No.

**PEC112**

Ext Colour

**Black**

History

-

Seats

-

CO2 Emissions

★☆☆☆☆

**278 grams/km**

Energy Economy

★☆☆☆☆

**Annual fuel cost not available**

Cost per year is an estimate based on petrol price of \$2.80 per litre and an average distance of 14000 km. Emissions and Energy Economy figures standardised to 3P WLTP.

**Stock ID: 3086**



Midway Motors | Phone 03 453 6555 | Email [sales@midway.co.nz](mailto:sales@midway.co.nz)  
197 Kaikorai Valley Road, Dunedin 9011, New Zealand  
[www.midwaymotors.co.nz](http://www.midwaymotors.co.nz)

\* Midway Motors is not a lender nor a financial adviser. Any amounts displayed should not be seen as an offer of finance or taken as financial advice. The interest rate, fees and loan term used in this calculation may not actually represent those available from lenders. Actual interest rates, fees and loan terms will vary per lender and are typically based on an assessment of your credit risk and responsible lending criteria. Any repayment amounts displayed are indicative only and have been calculated using several other indicative inputs. The interest rate used in this calculation is an arbitrary 12.95%, however exact interest rates vary per lender. The term of the loan used in this calculation is 60 months. Exact terms available vary per lender although options typically include 6, 12, 18, 24, 36, 48 and 60 months. This calculation also includes a typical mandatory fee charged by lenders. This is a one-off establishment fee of \$495.00. Typically, this fee can be paid upfront or, as in this calculation, be capitalised over the contract term, ie. included in the loan amount. This fee can vary per lender and other non-mandatory fees and charges may also apply. The total amount of repayments has been calculated by multiplying 260 weekly repayments (based on a 60 month term) by the weekly repayment amount of \$83.05 which equals \$21,593.38. This calculator does not consider any of your own personal circumstances and we strongly suggest you seek budgeting advice prior to committing to any loan contract. Responsible lending criteria and lender terms and conditions will likely apply to any finalised loan contract. Proof of security and/or vehicle insurance may also be required before proceeding.