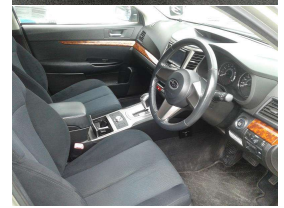
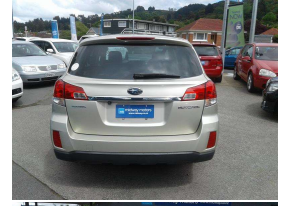


2009 Subaru Outback 3.6R



VEHICLE INFORMATION

Cash Price

Includes GST

\$11,990

+ on-road-costs of \$350

Finance this vehicle
from only

\$65.81

per week*

Total Amount Payable

\$17,111.00

Gain peace of mind
with Mechanical
Breakdown Insurance.
Ask us how.

Body

Station Wagon

Odometer

164,409 km

Engine

3600 cc

Fuel Type

Petrol

Transmission

Automatic

Wheels

-

VIN

-

Reg No.

MZN556

Ext Colour

Gold

History

-

Seats

-

Interior

Black/Grey, Cloth

Audio

-

Stock ID

2024

Exterior Features

Interior Features

Mechanical Features

- » 4x4
- » Timing chain motor, this means no cam!
- » Vehicle Stability Control

midway motors

Midway Motors, Phone 03 453 6555, Email chris@midway.co.nz
197 Kaikorai Valley Road, Dunedin 9011, New Zealand
www.midwaymotors.co.nz

* Finance calculation based on a 60 month term, no deposit and with an example annual fixed interest rate of 11.95%. Actual interest rate may be higher or lower. Includes an establishment fee of \$495.00. Full term total amount payable of \$17,111.00. Estimate only, not an offer of finance. Terms, conditions and lending criteria apply.