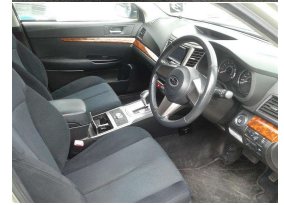
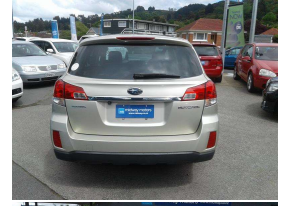


# 2009 Subaru Outback 3.6R



## VEHICLE INFORMATION

### Cash Price

Includes GST

# \$11,990

+ on-road-costs of \$350

Finance this vehicle  
from only

## \$65.81

per week\*

Total Amount Payable

\$17,111.00

Gain peace of mind  
with Mechanical  
Breakdown Insurance.  
Ask us how.

### Body

Station Wagon

### Odometer

165,087 km

### Engine

3600 cc

### Fuel Type

Petrol

### Transmission

Automatic

### Wheels

-

### VIN

-

### Reg No.

MZN556

### Ext Colour

Gold

### History

-

### Seats

-

### Interior

Black/Grey, Cloth

### Audio

-

### Stock ID

2024

### Exterior Features

### Interior Features

### Mechanical Features

- » 4x4
- » Timing chain motor, this means no cam!
- » Vehicle Stability Control

midway motors

Midway Motors, Phone 03 453 6555, Email [chris@midway.co.nz](mailto:chris@midway.co.nz)  
197 Kaikorai Valley Road, Dunedin 9011, New Zealand  
[www.midwaymotors.co.nz](http://www.midwaymotors.co.nz)

\* Finance calculation based on a 60 month term, no deposit and with an example annual fixed interest rate of 11.95%. Actual interest rate may be higher or lower. Includes an establishment fee of \$495.00. Full term total amount payable of \$17,111.00. Estimate only, not an offer of finance. Terms, conditions and lending criteria apply.